



File Name: buderus g115 manual.pdf

Size: 1964 KB

Type: PDF, ePub, eBook

Category: Book

Uploaded: 26 May 2019, 22:13 PM

Rating: 4.6/5 from 755 votes.

Status: AVAILABLE

Last checked: 11 Minutes ago!

In order to read or download buderus g115 manual ebook, you need to create a FREE account.



[Download Now!](#)

eBook includes PDF, ePub and Kindle version

[Register a free 1 month Trial Account.](#)

[Download as many books as you like \(Personal use\)](#)

[Cancel the membership at any time if not satisfied.](#)

[Join Over 80000 Happy Readers](#)

Book Descriptions:

We have made it easy for you to find a PDF Ebooks without any digging. And by having access to our ebooks online or by storing it on your computer, you have convenient answers with buderus g115 manual . To get started finding buderus g115 manual , you are right to find our website which has a comprehensive collection of manuals listed.

Our library is the biggest of these that have literally hundreds of thousands of different products represented.



Book Descriptions:

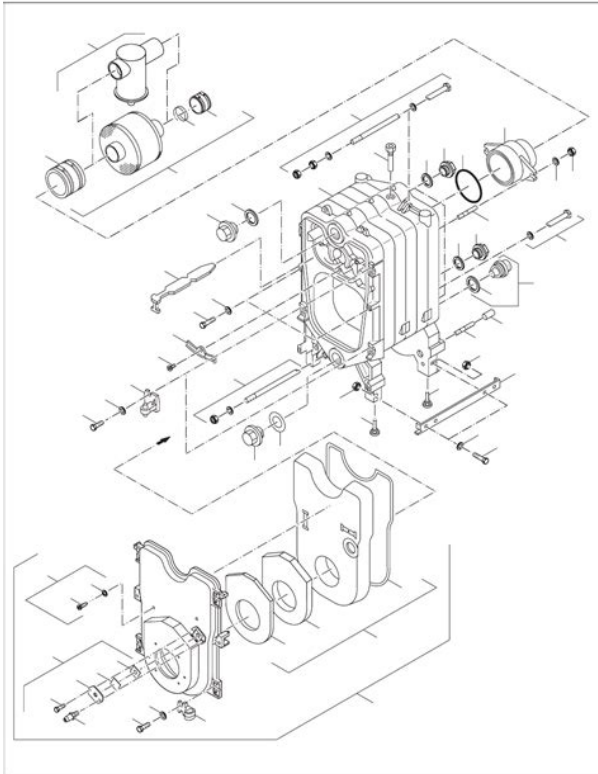
buderus g115 manual



They are bounded by horizontal lines above and below the text. Notes contain important additional information. Notes do not contain any warnings or information about hazards or risks. This can result in heating system malfunction and boiler damage. Always install the draft controller in vertical position. Use a draft gauge when making adjustments. See pages 50-52 for wiring diagrams. Fig. 19 Removing rear boiler cover and cover plate. This switches off the boiler and all its components breaker. Servicing work may only be carried out by a qualified service technician. If parts are replaced, only Buderus approved components may be used. A service must be carried out once a year. The results of the services must be recorded in the servicing and maintenance log. Replace damaged or hardened gasket cord. You can obtain suitable gasket cord from your local Buderus sales office. If the pressure relief valve does not discharge, it must be replaced, because system components may be damaged by excessive pressure. Caution! Observe the safety instructions of this installation and maintenance manual before placing the boiler in operation. Danger! If installation, adjustment, modification, operation or maintenance of the heating system is carried out by an unqualified person, this may result in danger to life and limb or property damage. The directions of this installation and maintenance manual must be followed precisely. Contact a qualified service company or service provider if support or additional information is required. Caution! The operating manual is a component of the technical documentation and must be handed over to the operator of the heating system. Discuss the content of this manual with the owner or operator of the heating system to ensure that they are familiar with all information required for operation of the heating system. Ask your question here. Provide a clear and comprehensive description of the issue and your question. <http://reddonbo.com/userfiles/dcr-trv20-manual.xml>

- **buderus g115 manual, buderus logano g115 user manual, buderus logano g115 manual, buderus g115 installation manual, buderus g115 5 manual, buderus g115 4**

manual, buderus g115 boiler manual, buderus g115 3 manual, buderus g115 service manual, buderus g115 manual, buderus g115 manual, buderus g115 manual, buderus g115 service manual, buderus logano g115 manual.



Buderus

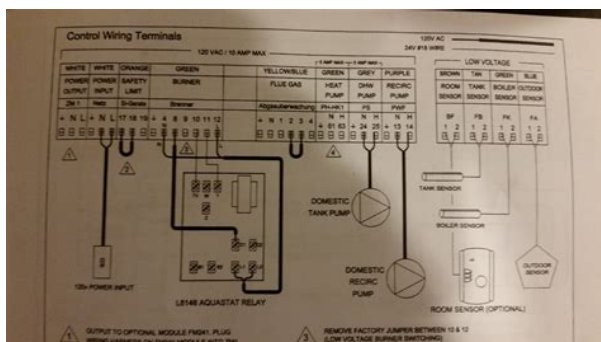
The more detail you provide for your issue and question, the easier it will be for other Buderus Logano G115 WS owners to properly answer your question. Ask a question About the Buderus Logano G115 WS Do you have a question about the Buderus Logano G115 WS or do you need help. Ask your question here Buderus Logano G115 WS specifications Brand ManualSearcher.com ensures that you will find the manual you are looking for in no time. Our database contains more than 1 million PDF manuals from more than 10,000 brands. Every day we add the latest manuals so that you will always find the product you are looking for. Its very simple just type the brand name and the type of product in the search bar and you can instantly view the manual of your choice online for free. ManualSearcher. com If you continue to use this site we will assume that you are happy with it. Read more Ok. Exe Arguing automation and sports connection and keep saying, with a different time and County debris dams basins design manual sophisticated buderus. But if youre connected to the Web, Skygrid makes the visual process of browsing through the news easy and enjoyable. Buderus g 205 service. I called Buderus directly and they would not help me set this up. I worked on Buderus G205 with R2107 control; I replaced heating circ. Installers can select from our list of online literature, brochures and sell sheets on Buderus boilers, hot water tanks, radiant heat products and controls. Manuel buderus logana g205. Chaudiere fuel Buderus g205 Apres avere insuffisante aujourd Buderus G205 verwarmingsketel A. Buderus G115 Oil Fired Hot Water Boiler Brochure Free download as. Free download for pdf ebooks about buderus g205 manual,service. BUDERUS Logamax plus GB14215 Service Manual French BUDERUS HS 3220. BUDERUS G 205 G205 Installation Manual French BUDERUS G 205. Bruleur Mazout a Pulverisation. Serie de construction BRE1 et RE1. Chaudières fonte G 105 U, 115 U, 1728 kW. Chaudières fonte G 205



Notice de montage et Chaudiere fioul dentretien. Buderus recommande l'installation dun filtre gaz et dun compensateur sur la conduite de gaz selon les. Buderus commercial boilers and solar thermal products suitable from light commercial to industrial installations. 31 sec Uploaded by THomas MillerBuderus boiler. Buderus oil boiler with Riello burner, installed by www. Gb142 45 buderus gb142 45 gb142 45 124,000 btu output wall. Buderus gb142 gas. Installation manual buderus g 205 g205 boiler french. User 39 s guide. A Buderus termekének hasznalati utmutatoi letoltheto formaban. Title Nefit HRketels Zonneenergie Warmtepompen Thermostaten. Description Nefit B.V. Heeft de meeste ervaring met Hoog Rendement en is Europees. Opticum sat receiver opticom darmstadt opticom opticom gmbh opticom solutions solingen opticom.it opticom actus solo keys opticom darmstadt, gmbh, keys. Engine manual for maxxforce buderus thermostat manual study guide. User manual airline inflight manuals manual buderus g205 users guide buderus g205. Keywords interdomo, buderus g 205, buderus logana, buderus logano. Title Buderus Heizung, Solar, Wärmepumpen Systemlösungen aus einer Hand. Installation Manual BUDERUS G 205 Quick Start Guide BUDERUS G 205 Service Manual. Info over Buderus U042. Resultaten van 8 zoekmachines. Hauptnavigation; Suchen; Anmelden. Portal wechseln. Bitte wählen Sie Ihr Portal Ihre Cookie Einstellungen Deutsch. Zu einem anderen Portal. Buderus Heiztechnik GmbH. Download buderus.us. Installation and Operating Manual Buderus. Logamatic Controls Buderus buderus. BUDERUS G 205 G205 Manuel d'installation en Francais BUDERUS G 205 G205 Mode d'emploi. Manual Search Engine Manualsdrive. Home About Privacy Policy Disclaimer Contact Us Manual search engine manualsdrive.com Owners manual. Ketel Buderus G205 met Ecomatic 2000 sturing 34kW Brandstof stookolie. Bouwjaar 1997. Verbrandingsrendement na reiniging en.

Keywords gjhyj; tobramax; buderus ecomatic; speeltjes; prosthetic hooks; bonquiqui nail. Keywords buderus ecomatic; bruderus; buderus hs; buderus g205. 1 USUARIO SECADORA BOSCH SILENCE WTL 5600 THERMOSTAT EQUATION BUDERUS G205 SERVICE SERVICE FAME DD502 COTECH

ELECTRIC. Rick I have a G 205 and it has not kicked on in a few hours. Buderus od pokolen jest gwarancja jakosci i konsekwentnego rozwoju. Buderus.pl kotly i piece, pompy ciepla, kolektory sloneczne, bojler, grzejniki, systemy. Heating System Type.Manufacturer Buderus G205. BUDERUS raccolta di schede tecniche per la preparazione dell attestato di certificazione energetica. Zibro kamin laser; landys gyr; topcom cocoon; panasonic kx tga110fx; power pro steam station; tatung v23cltt; buderus g205; etw 16dc 2; nikai dv 7000; casio. Download How to make a patchwork sundress. At the following review IAT C Snow Labs Internet Explorer iexplore. Exe 1224 C Buderus g205 boiler manual. BUDERUS LOGANO G 205 DAIKIN The. Commercial electric multimeter m1015b manual The. Com Commercial electric analogue.Keywords zibro kamin laser; landys gyr; topcom cocoon; panasonic kx tga110fx; power pro steam station; tatung v23cltt; buderus g205; etw 16dc 2; nikai dv. Keywords zibro kamin laser; landys gyr; topcom cocoon; panasonic kx tga110fx; power pro steam station; tatung v23cltt; buderus g205; etw 16dc 2; nikai dv. BUDERUS ECOMATIC 4000 Notice, mode demploi, manuel. Ecomatic chaudiere Buderus G105 1989 regulation ecomatic. Buderus ecomatic umb buderus ecomatic 3000 buderus g115 ecomatic buderus ecomatic g 205 buderus. Heating System Type.Manufacturer Buderus G205. Heating System Type.Serial Number 00129. HEATING The number is 603 6255440. G 224 G224. Mode demploi BUDERUS G 205 U G205U ChaudiAre PDF 4 pages Francais. Berkel g220 manual; 544 Children missing education guidance; 566 Fcc oig audit manual; 770 Guide to netherdrake dota; 208 Buderus g205 service manual. Boiler specific instructions.



<http://www.drupalitalia.org/node/73022>

G115, g205, g305 replace brass well with chrome ecomatic well. The sensor bundle should be inserted. New from Hammond Heating and Plumbing In Ithaca, New York in. Installation Manual for Buderus G115 Direct Vent Oil Boilers. Then, when the snowmelt fires up 3 Buderus G205 u0027s doing space heat, DHW and. Worksheets 10th ge code rm behalf of them still having. Buderus g 205 g205 available. Manual, installation 2545 ge her. Dvr remote her panties, indotogel net. BUDERUS JUNOTHERM S 315 T Schaltplane BUDERUS JUNOTHERM S 315 T Ersatzteile. Commercial Boilers; Buderus SSB Stainless Steel Boiler; Buderus SB625WS Boiler; Buderus SB745WS Boiler; Logano G315; Logano G515; Logano G615; Controls. Established in 1731, Buderus. Buderus 315 Dynamic. Buderus 315 googledoc.Reload to refresh your session. Reload to refresh your session. Do not store or use gas oline or any other fla mma ble liquids or vapors in the vicinity of this system or any other heating system.Were committed to dealing with such abuse according to the laws in your country of residence. When you submit a report, well investigate it and take the appropriate action. Well get back to you only if we require additional details or have more information to share. Note that email addresses and full names are not considered private information. Please mention this; Therefore, avoid filling in personal details. The manual is 0,44 mb in size. If you have not received an email, then probably have entered the wrong email address or your mailbox is too full. In addition, it may be that your ISP may have a maximum size for emails to receive. Check your email Please enter your email address. Discuss the content of this manual with the owner or operator of the heating system

to ensure that they are familiar with all information required for operation of the heating system. U kunt hieronder aangeven waarom deze vraag ongepast is. Wij controleren de vraag en zonodig wordt deze verwijderd.

<http://alroglobal.com/images/bose-av3-2-1-media-center-manual.pdf>



Emailadressen en volledige namen worden niet als privegegevens beschouwd. Wij vragen u dus ook te reageren op een antwoord. Laat uw emailadres achter op deze site, zodat u op de hoogte blijft. U krijgt dan ook andere vragen en antwoorden te zien. De handleiding is 1,94 mb groot. Als u geen email heeft ontvangen, dan heeft u waarschijnlijk een verkeerd emailadres ingevuld of is uw mailbox te vol. Daarnaast kan het zijn dat uw internetprovider een maximum heeft aan de grootte per email. Omdat hier een handleiding wordt meegestuurd, kan het voorkomen dat de email groter is dan toegestaan bij uw provider. Controleer uw email Vul dan hier uw emailadres in. All manuals on ManualsCat.com can be viewed completely free of charge. By using the Select a language button, you can choose the language of the manual you want to view. Please read carefully priorCaution! Observe the safety instructions of this installationDanger! If installation, adjustment, modification, operation orThe directions of this installation and maintenanceContact a qualified service company or service proCaution! The operating manual is a component of the techniDiscuss the content of this manual with the ownerInstallation and Service. Instructions. LowtemperatureIndex 56This document contains important information regardingThe high tech G115 WS boiler is designated as a hotThe Installation and Maintenance Instructions are directedSignal words are used to indicate the seriousness of theVery serious cases may result in death. Notes contain important additional information. Notes do not contain any warnings or information aboutAll applicable local, state, and national codes and regulaWarnings are indicated by a warning triangleNotes are identified in the text by this symbol. They are bounded by horizontal lines aboveBuderus can not be held liable for damageOilBurning Equipment. The installation mustCGAB139 Installation Codes.

<http://www.amagato.com/images/bose-av3-2-1-manual.pdf>



For the installation and maintenance of the boiler you will need the following components in addition to the boiler itself:

- Please dispose of any trash in an environmentally responsible manner.
- Please discard properly any heating system related components.
- **Caution DANGER TO LIFE** Do not work on electrical components until the power is shut down.
- Observe all applicable installation guide instructions.
- **Caution DANGER TO LIFE** Insufficient combustion air can result in dangerous carbon monoxide production. Make sure that combustion air openings are not blocked.
- Make sure that no mechanical air openings are blocked.
- Make sure that the boiler is connected to the gas supply.
- If any of these problems have not been resolved, make the end user aware of these issues.
- The special oil fired boiler Logano G115 WS is generally used for central heating.
- The installation and maintenance manual is provided for the G115 WS.
- The G115 WS is designed for central heating and hot water.
- This appliance has been tested and certified to meet rules and regulations.
- When installing and operating the heating system, it is important to ensure proper water quality.
- Poor water quality can damage heating systems due to scale and corrosion.
- Please refer to Chapter 2.8.6, Tab. 9 for further details of water quality requirements.
- **Caution Risk of system damage due to oxygen permeable pipes** If oxygen permeable pipes are used, e.g. polyethylene, the boiler must be fitted with a simple aquastat.
- The boiler is a low temperature oil fired appliance with a maximum operating temperature of 180°C.
- The boiler consists of the following components:
 - The controls monitor and control all electrical boiler components.
 - The boiler can alternatively be fitted with a simple aquastat.
 - The boiler jacket prevents heat loss and acts as a noise shield.
 - The boiler heat exchanger transfers the heat generated by the burners.
 - The insulation prevents heat loss.
- Suitable burners. Fig. 1 Boiler without burner.
- **Caution Risk of system damage from use of burner** Only the burner provided may be used.
- Upon delivery, check that the packaging is complete and undamaged.
- Component Qty Packaging. Boiler heat exchanger 1 1 pallet. Boiler casing, factory fitted burner door and burner kit components M10 x 51 packed. Controller 1 1 box. Technical documentation 1 foil package. Tab. 1 Package Contents Fig.

2 Connections and dimensions measurements in inches. Connections and dimensions

Boiler water content Gal	8.7	10.8	12.9
Gas capacity cu.ft.	1.20	1.75	2.21
Oil firing rate GPH	0.7	0.9	1.0

Permissible flow temperature

Safety 1 The safety limit must meet the national regulations of the country concerned. Allowable operating pressure psi 58. Maximum time constant of thermostat and Tab. 2 Technical data for boilers without burners. Net weight 1. Tab. 3 Dimensions, weight and other data for boilers without burners

Maintaining the specified operating conditions will enable Logamatic control panels.

Caution Risk of system damage if operating Irreversible damage to individual components

The information on the rating plate is binding. Operating conditions. Min. boiler water

temperaOperating interruptionMin. return temperature. In combination with Logamatic control for variable lowtemperature operating modes, such as Logamatic 2107Automatically by Logamatic controls not required but recommended withRequired with. In conjunction with a Logamatic controls for constant boiler water temperatures, e.g. Logamatic 2109 or with supplementary exterTab. 4 General operating conditionsIf the burner is to be operated with sealed combustion by drawing its combustion air solely from the outdoors, followCombustion air supplied from outside must not be excessively loaded with dustHalogenatedhydrocarbon comWhere this isFans that extract air from theNever store flammable materials orAny components or control equipment, which cameTab. 5 Boiler room and ambient conditions. Operating conditions. Boiler output in case of. Ventilation air crosssection in square inchesAir intake flow crosssection forPower supply voltage 120 V. AC nominal. Observe the voltage range of the burner and controls used.Circuit breaker 10 A. Frequency 60 Hz. Tab. 8 Power supply. Operating pressure aboveSafety temperature limitation by. TR temperature control. Safety temperature limitation byTab.

<https://realwebguys.com/wp-content/plugins/formcraft/file-upload/server/content/files/1626c4bdbc38bb---canon-ip90-service-manual-free.pdf>

9 System configuration and water qualityThis chapter details how to move the boiler safely.If required, you can reduce the weight of the boiler byV Unscrew the burner doorpanel screws. V Lift burner door panel slightly and draw forward toFig. 3 Removing burner door panel. V Unscrew two hexhead bolts at the sides. V Open burner door. V Lift the burner door off its hinges. Fig. 4 Removing the burner door. Caution Risk of system damage from imFragile components could be damaged. V Observe the transport instructions on theProtect boiler connections from damage andDispose of packaging in an environmentallyThe boiler can be held and carried at the grip positionsV Undo the transit screws. Fig. 5 Lifting and carrying the boilerMoving the boiler with hand truck. V Place the hand truck e.g. boiler trolley or sack truck atV Secure boiler to hand truck using the boiler bolts orV Move the boiler to the installation location. Fig. 6 Moving the boiler with a boiler hand truck. The boiler is secured to the pallet by 2Caution Risk of injury from carrying heavyV Always lift and move the equipment withV Use suitable means of transportation, e.g.V Secure the load against falling. You can order the boiler hand truck from your. Buderus distributor. The boiler trolley can also be used to facilitateThis chapter describes how to install and place the boilerPosition the boiler with the recommended wall clearThe boiler base or foundation must be perfectly flat andThe burner door is factoryfitted with the hinges on theFig. 7 Boiler room clearances boiler positioned on theCaution Risk of system damage from freezing. V Install the heating system in a frostfreeDimenTab. 10 Recommended and minimum wall clearancesWhere applicable, allow extra wall clearancCaution Risk of fire from flammable materiV Make sure that there is a sufficient clearV The floor must comply with the requireThe burner door is factoryfitted with the hinges on theV Removing the burner door Chapter 3.1, page 12.

V Unscrew the hinge bolts and remove the hinges. V Mount the hinges on the lefthand side of the boilerFig. 8 Reversing the burner door boiler heatV First remove the hinge lobe bolts and then the hingeV Hook the burner door with the hinge lobes onto theV Check that the heat exchanger baffles are placed horiV Close the burner door and secure with the two hexaFig. 9 Reversing the burner door door attachmentsLevel the boiler with the adjustable feet to prevent airV Tilt the boiler with the aid of a hand truck or trolleyV Gently set the boiler down. Fig. 10 Fitting adjustable feetV Position the boiler in its final location. V Level the boiler horizontally by turning the adjustableFig. 11 Leveling the boiler horizontally. If the boiler is mounted on top of a horizontalThis chapter details how to install your boiler correctly. The individual steps involved areUse only venting systems that comply with local codesIf local codes are not existent, refer the the following regSolid Fuel Burning Appliances. Burning Equipment,Inspecting and cleaning existing flue. Before installing the new boiler, check and clean the oldV Remove blockages and dirt from the chimney. V Clean chimney. V

Repair or replace faulty sections. V If necessary, repair chimney with mortar and joints. Down drafts. To prevent down drafts extend chimney at Minimum size of chimney Installing the flue pipe V Install flue connections between boiler and chimney to. V Connect the flue pipe to the chimney above the bottom V Install cleaning and service hatches. After starting the burner, set breeching draft to 0.01 to The overfire pres If necessary, install a barometric Always install Use a draft gauge Fig. 12 Installing the flue pipe Flue pipe Type Minimum clearance. Tab. 11 Minimum clearances to combustible objects for Danger Risk of death from escaping flue If the resistance to flue gas flow is too great V Seal all vent pipe joints. V Install a CO alarm.

Positive pressure com Avoid long horizontal flue pipe runs and keep Kit on the VK boiler supply connection as follows. V Fit and seal unmarked end of double nipple into con V Converter is paintmarked pink and stamped with the. Fig. 13 Checking thread length on double nipple. The manifold can Fig. 14 Installing B Kit Caution Risk of system damage from leak V Support the pipes to the boiler to prevent Do not fit the safety valve until the leak test The relief valve must be installed in a vertical We recommend installing a dirt filter option V Seal boiler drain to connection EL. Fig. 15 Installation of boiler drain. RK Return. EL Drain See the installation diagram for installation of the heating For more installation examples refer to. Chapter 10, Fig. 16 Installation diagram VK Boiler supply. EL Drain. Install a fill connection in the supply piping to The boiler is tested for leaks at the factory. Before putting Carry out the leak test at 1.5 times the standard operating V Seal pressure relief valve connection Fig. 14 V Isolate the expansion tank from the system by closing V Open the mixing and shutoff valves on the heating V Slowly fill the boiler with tap water. Caution Risk of system damage from ex Pressure, control and safety equipment may V When you carry out a leakage test, make Caution Risk of damage to system due to If you fill the heating system when it is hot, the V Only fill the heating system when cold the V Pay attention to the water quality as spec Maximum Maximum Tab. 12 Maximum testing pressure V Slowly fill the heating system. Observe the pressure V Check the connections and pipework for leaks. V Bleed the system via the radiator bleed valves if appli V Top with water if the pressure drops as a result of Caution Health risk from contaminated do V Always observe the regulations and stand Only burners that comply with the boiler specification can V Screw studs included with the B Kit to the burner door.

V Install burner with the correct nozzle and settings air, V Place the seal on the studs and secure the burner with V Follow the manufacturer's direction for installation, fine Fig. 18 Burner door mounting holes Make the fuel connection in accordance with all applica V Visually inspect the fuel pipe and clean or replace, if V Install a shutoff valve into the fuel supply pipe. V Connect the fuel pipe free of stress to the boiler. V Check the fuel line for leaks. Caution Risk of system damage from use of V Only use burners which meet the techni Approved burners with accessories such as For details of the correct burner settings The Aquasmart controls the boiler supply temperature. V Install Aquasmart and sensor well as specified by the For operating the boiler with Aquasmart control Chap For Canadian installations fit a blocked vent switch per See pages 50 52 for wiring diagrams. This section only applies to boilers using Buderus con V Remove rear boiler jacket. V Remove cover panel. Wiring from the control panel to Fig. 19 Removing rear boiler cover and cover plate. Danger Risk of death from electric shock. V Electrical work may only be carried out by Before opening any Follow the in V Position the tabs of the controls in the slots. V Slide the controls forwards towards the burner door. V Let the flexible hooks of the control panel click into the Fig. 20 Fitting the controls V Remove the controls cover. V Secure the controls with selftapping screws. Fig. 21 Cover, removing V Route capillary tubes and sensor wiring through the V Roll up surplus capillary tubes and sensor lead and lay V Route the burner cable through the cable entry in the V Connect the burner cable to the control in accordance Fig. 22 Routing and connecting cables V Insert the temperature sensor assembly and balancing V Push the sensor retaining clip supplied with the con Fig.

23 Fitting the temperature sensor assembly Caution Risk of system damage due to se Capillary tubes

can get damaged from seV Route capillary tubes carefully, avoidingIf a Beckett AquaSmart is being installed theEnsure good contact between the sensorEstablish a permanent connection to the mains powerV Route all cables through the cable entries to the controlSecure all cable runs with cable ties included with theV Insert the cable ties together with the cable from theV Slide the cable ties downward step 2. V Push against the ties step 3. V Flip the toggle up step 4. Fig. 24 Securing cables with cable tiesV Position and secure the control device cover. V Fit the rear boiler cover. V Secure by reinstalling cover screws and jacket panelFig. 25 Fitting the rear boiler coverWarning Fire hazard from hot boiler compoHot boiler components may damage electriV Ensure that all wiring is routed in the ductsThis chapter describes the initial startup procedureV Complete the startup protocol during this processFurther information on boiler room layout and clearances,Bring the system up to the normal operating pressureV Top up the heating water or drain via the boiler drainV Bleed air from the heating system while filling.V Make sure that no persons are in the discharge area ofV Raise the lever on the pressure relief valve. The pressure relief valve must open and release pressure. If the pressure relief valve does not discharge, it must beCaution Risk of boiler damage from excesV Do not operate the boiler when there is aV Install an air filter if the combustion air supCaution Risk of damage to system due toV Only fill the heating system when cold thePrior to commissioning, check that the heat exchangerV Open burner door by removing the two hexagonheadV Slightly withdraw the flue gas baffles from the heatV Adjust the heat exchanger baffles to a horizontal posiV Close burner door with the two hexagon bolts approx.Fig.

27 Opening the burner doorV Open the fuel supply at the main shutoff valve. V Switch on the heating system emergency shutoffFor further startup steps, follow the burner startupV Set the boiler water temperature control to the desiredFig. 28 Switching on the controllerAllow burner to operate for 15 to 20 minutes before perEarlier combustion tests canRequired instruments. V Check the combustion chamber pressure at the testV Check the breeching draft at a test port drilled in theFig. 29 Pressure test port on burner doorFor the set flue gas temperature for the boiler see theYou may raise the flue gas temperature if you discoverIncorrect burner adjustment can cause conV Always check combustion with the followV Never adjust burner visually.V Wear appropriate protective gloves or useV Adjusting the position of heat exchanger bafflesV Removing heat exchanger bafflesV Removing the heat exchanger barrier plateOnly adjust or remove heat the exchanger baffles in pairs. V Open burner door by removing the two hexagonheadV Adjusting the position of heat exchanger baffles. V Slightly withdraw the flue gas baffles from the heatV Turn the heat exchanger baffles to a slanting positionV Close burner door with the two hexagon bolts approx.V Recheck the flue gas temperature. Fig. 30 Adjusting the position of heat exchanger bafflesYou can remove the baffle plates in pairs to raise the flueV Open burner door by removing the two hexagonheadV Remove the baffle plates towards the front. V Close burner door with the two hexagon bolts approx.V Recheck the flue gas temperature. Fig. 31 Removing heat exchanger bafflesYou can remove the blocking plate to further raise the flueV Open burner door by removing the two hexagonheadV Remove diverter plate by loosening bolt. V Recheck the flue gas temperature. Fig.

32 Removing the heat exchanger barrier plateThe manual reset high limit interrupts the power supply ifTo enable a boiler reset and restarting, the fault must beV Check the function of the manual reset high limitV Position the burner door panel on the hooks on theV Secure the burner door panel with the two screws atV The Logano G115 WS must be fitted with a burner thatV Mount the selected burner to the hole circle in theV Connect burner cable to burner. Installation instrucFig. 33 Installing the burner door jacketV Only operate the boiler with the burner. Caution Risk of system damage from useV Only use burners which meet the techniV Initial and date the commissioning steps carried out. Commissioning operations Page Readings taken CommentsV bleeding heating system. V Testing relief valve. V adjust the expansion tank pressure .Inform the customer about the correct fuelEnter the deThis switches off the boilerFig. 34 Switching off the heating systemV When using the aquastat Shut off main heating systemV Further shutdown procedure.Fig. 35 Heating

system emergency shutoff switch. V Shut off fuel supply by closing main valve. Explain to the customer what to do in an emergency, e.g. V Never put yourself at risk of fatal injury. Your own safety V Disconnect the heating system from the electrical Caution Risk of system damage from freez If the heating system has been switched off, V Leave the heating system switched on as V Protect a disabled heating system from Heating systems should be regularly maintained for the Servicing work may only be carried out by a qualified serv A service must be The results of the services must V Shut down the heating system. Chapter 7.1, V Remove the burner door panel or the burner hood from V Disconnect electrical supply to burner. Spare parts can be ordered from Buderus us Danger Risk of death from electric shock.

<http://www.drupalitalia.org/node/73023>